

Farquhar Park Aquatic Center

York, Pennsylvania

Project Information

Occupancy - Assembly

Size - 36,987 SF

Stories - One story (53'-0") with raised seating
- Entrance, concourse, and gallery level

Construction Dates - Project Not Constructed

Cost - \$13 million

Delivery Method - Design-Bid-Build

Design and Construction Team

Owner - YMCA of York and York County

General Contractor - N/A (Not Constructed)

Architect - Nutec Design Associates, Inc.

Structural - Nutec Design Associates, Inc.

MEP - JDB Engineering, Inc.

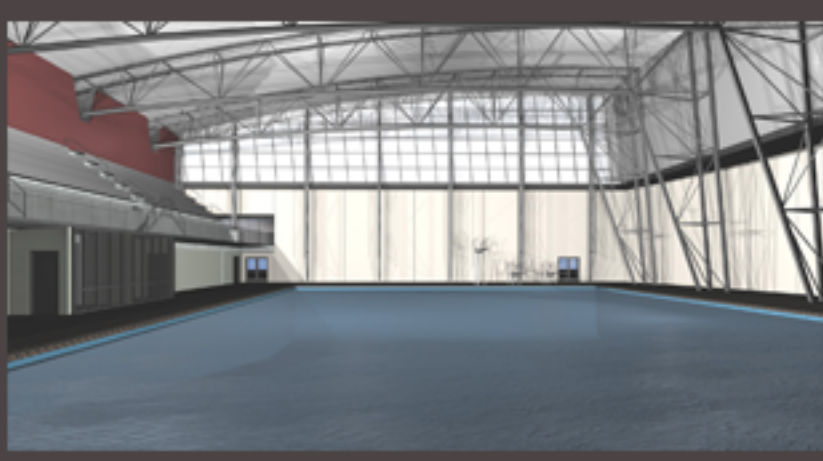
Geotechnical - GTS Technologies, Inc.

Fire Protection - JDB Engineering, Inc.



Architecture

- Multi-level, state-of-the-art natatorium complex
- 53-foot high natatorium with raised seating
- 12-foot deep indoor swimming pool
- Vast lobby with 23'-0" ceiling height
- Precast concrete ramp to upper level
- Facade: metal wall panels, precast concrete panels, and glazed curtain walls
- Two large sloped/curved glazed aluminum curtain walls enclosing indoor pool area (each 123'-11" long and 21'-0" tall at highest point)
- Standing seam metal roof panels
- Plant climbing system on outside faces of exterior walls
- Designed to achieve LEED Silver Certification



MEP

- Two large PoolPak dehumidification units
- Dedicated ventilation unit with heat recovery for the locker and toilet areas
- 12,000 CFM rooftop unit with a dehumidification cycle, including hot-gas reheat, for the entrance and eating areas
- Two air cooled condensers with 6 fans each
- Primary service is 13.2 kV, 3 phase, 3 wire
- Main distribution panelboard 277/480 V, 3 phase, 4 wire, 1200A
- Sound and paging system
- Lighting includes incandescent, fluorescent, and HID fixtures with occupancy sensors

Structural System

- Triangular HSS trusses spanning 130'-0"
- Columns for trusses are triangular, tapered, and spaced 30'-0" on center
- Long span deck to span between trusses
- HSS wind column trusses, 3'-0" deep, 51'-0" tall
- HSS columns supporting upper levels vary from HSS6x6 to HSS18x18
- Precast concrete grandstand supported by sloped W27 beams and HSS columns
- 12" hollow core precast concrete planks with 2" lightweight concrete topping supported by W-shape beams at concourse level
- Lobby HSS trusses spanning about 41'-0" and spaced 15'-0" on center
- Isolated spread footings at various depths